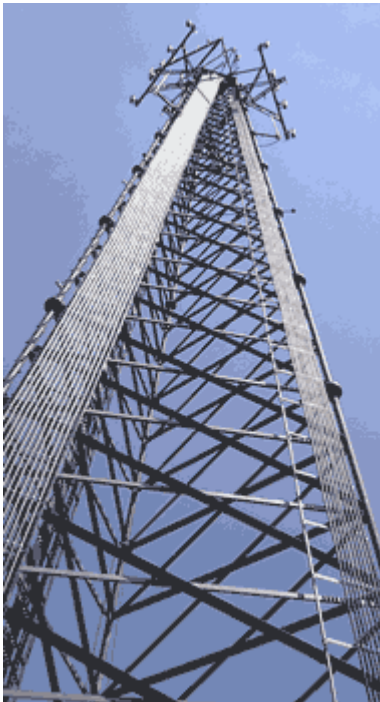


ScannerDigest Newsletter

ISSUE 29

MAR-APR-MAY 2004

-
- ◆ **Emergency Notification Service**
 - ◆ **Promoting Amateur "Ham" Radio**
 - ◆ **Communications Profile:**
Cumberland County PA
 - ◆ **Scanner Related Links**
-



Here's a familiar site as more and more towers are going up in not only in urban/suburban areas but also in the rural areas throughout the USA. Radio transmitters for public safety, paging services, cellular, PCS are can create havoc on a conventional radio system thus jeopardizing the reliability of the radio system.

PUBLISHER

Lou Campagna, Publisher
POB 207
Jamison PA 18929
ScannerDigest@usa.com

Welcome to another issue of the SD Newsletter. This particular issue was delayed due to circumstances that were beyond our control. We are sorry for the inconvenience that this may have caused. We are making every effort to continue providing our newsletter on a timely basis. We have received a dozen or so

inquiries as to what the delays may have been. Notifications have been made and we're glad to say that we're back to work.

As always the success of our publication is dependent on the reader participation. All readers are encouraged to send us news regarding scanner monitoring topics. We are also able to use your public safety photos so we encourage all to send in your photos.

We would also appreciate if our readers could let other scanner listeners know what **Scanner Digest Newsletter** is all about. Have your friends and associates contact us directly at:

ScannerDigest@usa.com

Once new subscribers contact us, we can place them on our distribution mailing list and they'll automatically they'll receive the most updated version of our newsletter mailed directly to their email address. To protect our reader's identity, we employ a mailing system that masks the email address of our recipients. This minimizes the risk of email spam that may inconvenience our readers.

For those readers that were curious, we keep our mailing list private. I'm personally responsible to maintaining the integrity of our mailing list private. I never have nor plan to in the future disclose, distribute or sell our mailing list to an outside entity. As a matter of fact, I don't even collect your name. Our mailing list is listed in the database by email address only.

We had a last minute submission from Alan Cohen and I wasn't able to find a suitable column to place it in so here's the information. I was so intrigued with this site that I now participate in this notification system for weather notifications in my home area. Thanks once again to Alan Cohen for submitting this.

Emergency Notification Service

While thumbing through some of the interesting sites on the web, I stumbled upon a very cool site that provides timely information via email, cell phone or pager.

Get notified of an emergency by email, cell phone, pager from your local, regional and national government sources.

The practical use of early notification is in the event of a weather related emergency. Hurricanes, snow storms, tornadoes, heavy storms and flooding conditions are just few reasons why you may want to be notified.

You can navigate through each state then through each county to get selective reports sent to your preferred devices.

There are also emergency resource links to various local, state, and federal web sites that can provide updated information in a variety of topics.

Alan Cohen

The Emergency Email & Wireless Network®

A Service of The Emergency Email Network ®
"It's what the Internet was made for"

<http://www.emergencyemail.org/>

MISSION

"Provide notification to citizens of local, regional, national and international emergencies utilizing the Internet and electronic mail (email) in a secure and expedient manner"

GENERAL EDITOR

Jeff Newton
c/o Scanner Digest
POB 207 Jamison PA 18929

With the summer season in full blown swing, we are starting to see some increasing scanner activity all over the country. With most public safety agencies leaning or going to digital communications many of them are still in their conventional analog systems.

But, the near future - say 10 - 15 years down the road, digital communications and scanning would probably be the norm for all in the hobby and my just a twister lil' few left in their old ways.

All it takes is money, but just how much money can one's city or county government fetch from taxpayer's to make their dream system work? - Only the Motorola salesperson knows, unless he/forks over the wits of nasty deal making to get the deal and commission written and done...

Like I said, before, only time will tell!

Happy summer and belated spring!

Jeff
General Editor
Scanner Digest Newsletter

DELAWARE

Column Editor Wanted

Interested individuals are encouraged to contact us at:
ScannerDigest@usa.com

EASTERN NEW YORK

Howard Miller
c/o Scanner Digest
POB 207
Jamison PA 18929-0207
ScannerDigest@usa.com

Welcome to issue #29. This winter has been tough. Spend most of my time shoveling and sweeping only to start digging again. This issue, we have the 600 series of the NY State Fire Incident Codes

600 Good Intent call
611 Dispatched & cancelled in route

621 Wrong Location
631 Authorized controlled burning
632 Prescribed fire
641 Vicinity Alarm (incident in different location)
650 Steam/other gas mistaken for smoke
651 Smoke scare (odor of smoke)
652 Steam/ vapor/gas/dust mistaken for smoke
653 Barbecue ----Roofers tar kettle
661 EMS call ---- Party transported by non-fire agency
671 HazMat release investigation w/no HazMat

NY Fire Frequencies

Rockland Co	46.180	F1	Fire Disp'	Ident.	44	Control
	46.080	F2				
	46.480	F3	W'chester			
	46.260	F1	Dispatch	60		Putnam.
	46.380	F1	Dispatch	40		Dutchess
	46.360	F1	Dispatch	14		Orange
	154.205	F1	Dispatch			Delaware
	46.060	F1	Dispatch			

That's it for this month. I got to go shovel awhile. Howard.

MASSACHUSETTS

Peter Szerlag
c/o Scanner Digest
POB 207 Jamison PA 18929
Zerg90@hotmail.com

Several agencies in Western Massachusetts have applied to the FCC for new frequencies. Here are a few of them.

In Hampshire County.....

Worthington FD - 159.420 portable radios to be linked to the county fire freq of 154.370 via mobile extenders (MO3s in the FCC database)

Hadley FD - 156.0625R narrowband repeater with 159.3675 as the input channel - 1 repeater plus 15 mobiles

Amherst FD - 159.30R with 151.385 as the input - 1 repeater plus 60 mobiles - they are also licensed for the county fire freq (154.37) and the county fire ground channel (153.89). Amherst FD has been licensed on 159.30 since 1994, but it is possible that they have never used the frequency. I suspect that the new repeater will be very useful for the Amherst FD since the University of Massachusetts has several very large buildings in Amherst.

Belchertown FD - 155.925 base and mobiles - they are adding 166.25 for 30 portable radios

Ware FD - 153.92R - 150.805 input - 2 repeaters plus 100 mobiles

Pelham FD - adding 25 portable radios on 170.15

In Franklin County.....

The Massachusetts State Police are licensing several sites to be used in their 866 MHz Trunked Radio System (TRS). MSP began using 800 MHz back in 1988 or thereabouts. In 2004, some MSP units still use radios on 42 MHz as their primary communications system.

In Worcester County.....

Brookfield FD - 154.7325

Grafton FD - portable radios on 46.30 to augment their 46.48 primary channel

Western Massachusetts is much hillier than eastern Massachusetts. The highest point in Massachusetts, Mount Greylock in North Adams, rises to 3,491 feet near the Vermont / New York border.

The skip was hitting the Boston area pretty good on Saturday 17 April 2004 from 0630 to 0900 ish. Here are some of the stations that I heard.

160.20R - Limington Maine Rescue dispatched by SP Gray - Portable 34, Car 12, Rescue 2, Portable 8

159.39R - Maine Forest Rangers attending a wildfire training session in Bridgeton : 42-12, 42-14, 42-13, 42-71

460.525R - Sanford Maine FD - Engine 2, Engine 1, Engine 4, "Sanford" - 3 second unkey time on the repeater after Sanford talks - 5 second unkey time on the repeater after a mobile or portable radio (field unit) talks.

153.83 - Keene NH Dispatch announcing that the FF1 class in Winchester NH had been cancelled - this repeater is located in Winchendon MA

154.295R - (? Rollingsford) Engine 1 on the air for the day at a training burn in Elliot Maine

155.505 - "X1, go ahead Lieutenant" - "Thank You" - Rhode Island State Police

460.275 - data bursts - possibly from a Packet Cluster system

460.55R - York County Maine Fire/EMS

453.675R - some PD - complaint at 88 Wharf Road about dredging the channel too early - long standing dispute with "City Hall" - document the situation - unknown what time the dredging is allowed to start

154.25R - ?North Providence RI FD - Rescue 2 and Engine 3 to a EMS call - then E4 E1 E2 L1 Sqd Bat1 to a fire call

451.45R - spanish accents - mention of the "4th floor"

453.6625R - 804 - "FD is responding to a fire alarm on Rte 13"

453.40R - some PD

154.37R - Providence RI FD primary channel - Rescue 5 sent to a EMS call - R5 then requested an Engine to assist - Engine 13 was sent - later Rescue 4 and Engine 2 were sent to an "auto accident"

153.95 - Kittery Maine FD units - 27C - 27 Engine 2 - Kittery Point Station and 27 Engine 7 - possibly this was from 154.43 and being repeated by the Needham MA FD repeater

451.60R - maintenance guys - possibly Avalon at the Pru in Boston or Sun Micro Systems in Burlington MA or Conoco Phillips Company in East Boston

460.55R - Leominster MA FD - box beeped 2 rounds - "Light 12 for the Ladder" (they control the traffic lights from the dispatch office apparently)

460.275R - some PD in RI perhaps - Dexter St - Cranston St

451.8875 - LTR - Car 2 going to ?Ball Square - possibly I2Way Corp TRS

453.675 - NH DOT

452.0125R - "Beth Johnson's lab is on the 3rd floor" - possibly Boston Medical Center or Holy Family Hospital in Methuen MA

452.5125 - a control channel? - possibly UPS in Lynnfield MA

460.60R - Kingston MA FD

154.145R - Hampton NH FD - E2 and L2 are the "Town Companies"

453.2625R - water dropping from ceiling - "Info Desk to Security, shall I call a Code Brown?" - no, security will standby until the maintenance guy arrives - possibly Mass Eye and Ear Hospital in Boston or UMass Dartmouth

453.15R - Holbrook FD - E2 e3 R to a EMS call

453.5125 - "Rescue 2 on the air" - possibly North Attleboro FD

Greetings from the Commonwealth of Massachusetts. I hope that you all survived Saint Patrick's Day, and had a wondrous Patriots Day (April 19 in Boston).

Here are a few new freqs for the Boston area -

Dedham FD - 453.6875 - licensed March 2004 (as of March 13, 2004, Dedham FD was still using 153.95 - Engine 4 and AMR Medic 9 were dispatched to a EMS call in Dedham)

Hull - pending license for a repeater on 159.12 with 153.995 as the input channel

Plymouth FD - 470.4250 + 470.7500

New England Medical Center in Boston - pending license for a narrowband trunked system - 451.1375 - 451.0875 - 451.0375 - 451.6625

Target Store on Allstate Road in Dorchester - pending license for 461.20R and 461.4875R

The Massachusetts State Police are preparing to release Requests For Proposals on a new Intelligence Management System, and Mobile Data Suites. Apparently each Mass State Police car will be equipped with GPS, AVL, scanners, and possibly mobile terminals capable of video or pictorial transmissions.

The Massachusetts State Police are also looking to buy 2 new armored vehicles. The trucks will be approximately the size of a Ford 550, and be capable of carrying a dozen SWAT members. Each vehicle will have 2 MSP supplied radios, and a MSP supplied police scanner.

AMR - 'North Shore 1' is 153.32 (not repeated) - 'North Shore 2' is 155.355 - both use PLs of 179.9 - the AMR dispatchers that use these channels are located in Newburyport MA - ambulances from both Massachusetts and New Hampshire are sometimes dispatched on 153.32

853.5625 is still an active data channel for some law enforcement agencies in the Boston area (08 Mar 2004)

The City of Cambridge has upgraded its TRS to a Type II system. TG17904 is PD Channel 8 - TG16816 is FD Channel 1

West Newbury FD conducts their tone test on 154.01 daily at 0800

Methuen FD still uses 154.01 as their primary channel as of 11 Mar 2004 (a structure fire call got Car 2, Engine 5, Engine 6, Ladder 1, and Rescue 1) - the dispatcher gave out the precise location of the fire building and the locations of the 2 closest hydrants

151.04R is the DPW for some Town - Base 5 was heard talking to W7 about the generator at TwinBrook

453.10 has been heard carrying P25 traffic - probably from Boston EMS administrators or electronic techs

157.10 - Group Boston Coast Guard reports live fire exercises in progress on Sunday morning 14 March 2004 - Prez Bush has requested \$1.8M in the FY2005 budget to equip all of the HH-60J helos at Cape Cod Air Station with arms

Located just over the CT Western State line is Putnam County, NY which has just placed a new VHF repeater system in service under callsign KED 862; 154.4375/150.7900 PL 131.8 and can be heard DFQ in the Hartford area. They have three repeaters on this system.

For those of you that aren't aware, New Britain Fire has switched all dispatching and operations over to the conventional channel of 855.9625 MHz (R) PL 151.400 under callsign WPOZ 284. The only transmissions heard on the citywide trunk system are the initial dispatch due to some of the stations still have trunking radios and haven't added the dispatch.

Massachusetts Column

460.275R - 19 Feb 2004 - 1110 AM - Boston interoperability radio check - 3rd Thursday of the month

State TRS - TG 38928 - 'NIAD' unit conducting radio test with State Emergency Management Center in Framingham

154.16 - Gloucester FD - they do a station identification announcement at 8AM every morning

463.375R - possibly this is Security at Bunker Hill Community College in Charlestown in Boston - Units 116 + 441

Franklin County will reportedly be transitioning from a low band radio system to a UHF radio system.

January 2004 - Cambridge TRS has reportedly moved to all Type II talkgroups

154.815R - Acton PD
166.225 - P25 traffic - Hanscom AFB FD

164.65 - Boston Secret Service base - clear analog traffic

Info from the Internet

Boston area - ITAC 3 - 867.5125 - PL156.7
Norfolk County Jail - 855.4625 D023 - 866.9125 and 868.1625 are new

Hanover PD - 483.625 PL203.5

Hanover FD - 484.40 PL107.2
Norwell PD - 484.65 D023
Fire District 14 - 453.3875 D065 + 471.05 D172

MedStar Ambulance began to operate a ALS ambulance from the Nashoba Valley Hospital in Ayer - they will respond to 911 calls in Pepperell and Groton - MedStar possibly operates on a UHF TRS from Alpine Hill in Fitchburg

Huntress - 271.00 AM - often heard

Holden PD moved from 453.7375 PL131.8 to 460.3875 PL127.3 - just the dispatcher is heard on 45.38 now

Bedford VA Hospital PD - 163.4625R - digital
GSA PD in Boston - 417.20R - digital
Hudson FD - 470.70R - D411
Hudson PD - 470.60R - D411
Verizon Airfone - Boston Airport Ramada Inn - KNKG804 - 849.6055 FB6S

Ayer FD - 470.425 - D065 - narrowband - not linked to 46.14 nor 46.10

Plympton - 453.4125 PL203.5 - FD + ? PD - MSP Middleborough might be the dispatch point for the FD

If anyone has any corrections or updates to offer, please send them in. Peter

CONNECTICUT

*Keith Victor
44 Suffolk Drive
East Hartford CT 06118
alarmroom@juno.com*

Many new frequencies have been placed in service recently:

Bloomfield Fire 859.3875 MHz 167.9
Manchester Fire 453.2125 & 453.4625 MHz 107.2
Middletown Fire 155.085, 151.325, 159.270
Simsbury Fire 859.3875 MHz 167.9
Terryville Fire 453.7375 MHz D114

Attached is the latest listing of all departments and centers that are on the Hartford Intercity Fire Mutual Aid Network.

The frequencies are:
154.2650 MHz PL-107.2
452.5500 MHz PL-167.9
458.6875 MHz PL-167.9
859.3875 MHz PL-167.9 (R)

I was notified by CMED today that due to some technical problems 453.125 MHz will not be changed to be the main TIMS dispatch channel, But 453.175 MHz formally TIMS 2 will be now

the TIMS Dispatch channel with 74.4. Please make the necessary corrections to your listings and the 453.175 MHz PL 74.4 was turned on today 3/31/04.

Be advised that the new Hartford Citywide channel is up and running : 460.775 Mhz (R) PL 94.8

Hartford Fire new callsign WPZU 819 for 154.265 MHz and 154.310 MHz

Bridgeport Fire add 155.085 under WPCU 976

Again, I recently spoke with the director of communications for the City of Middletown and these are the major changes for the fire districts:

City Fire: 155.085/156.105 PL 91.5
South Fire: 151.325/153.575 PL 79.7
Westfield Fire: 159.270/150.790 PL 71.9
Command Fire 4: 155.835/154.815 PL 206.5

These changes are supposed to go into effect within the next 45 days.

Newtown Fire began today using 154.1225 Mhz (R) D156 for fire and EMS operations. Be on the look out for the DPW and Police to start using their respective VHF repeaters soon.

Keith

AMATEUR (HAM) RADIO

Column Editor Wanted

*Interested individuals are encouraged to contact us at:
ScannerDigest@usa.com*

From: "Don" dhobson123@aol.com

Another related hobby.....give Ham Radio a try if you have time

First thanks for letting me post here to this radio related group.....just a friendly invite to a radio hobby related group that some of you might be interested in.....Ham Radio Help Group....ALL are WELCOME! If you are new to Ham Radio, a current Ham wanting support on upgrading, or a Ham that would just like to help by supporting someone direct or maybe providing study material then please give Ham Radio Help Group a look over (we usually have someone giving out FREE study material every so often also....current FREE items in our "Polls" is an ARRL entry Tech License book "Now You're Talking"...an ARRL Extra study book.....a FREE 2 year subscription to HamTestOnLine (worth \$29)....Join in and put your name in the hat!). So far a great group of good diverse folks from those new to Ham Radio asking questions to get involved to current Hams upgrading or giving advice! Here are a few facts about the group thus far:

- 800 members and growing
- 4400 message posts in just a few months....very active group so if you join in please set your mail code to "daily digest", "Special Notice Only" or "NO Mail" and read posts on line because on busy test weekends we have averaged 100 posts in just a few days! - Members giving and receiving FREE study materials so

check our "Polls" and posts (study materials like ARRL/Gordon West Tech, Gen, Extra books or code study tapes etc) - Many members getting their first Ham Tech tickets and just starting out.....sharing testing times and support of members passing tests is encouraged (over 60 members upgraded in just a few months!) - Group has 5 moderators to motivate the group - Sunday Group ChatNight and also EchoLink Net - 8pm CST (open to all so even those that are not Hams can participate one on one and ask direct questions or meet members) - Many message posts on study help ideas, support, station building, basics, etc.

- Check out our Calendar, Links, Database and Files sections also

The main purpose of the group is to support those wanting to get licensed, upgrade, or Ham willing to help with advice or pass study material along (no negative, no political posts...support only). This group is focused on promoting Ham Radio in a positive way so if this sounds like something you might be interested in please join in!

<http://www.hamradiohelp.com>

<http://HamRadioHelpGroup-subscribe@yahoo.com>

<http://groups.yahoo.com/group/HamRadioHelpGroup/join>

de kb9umt Don

MILITARY

*Daniel Myers KB3IBQ
823 Horsham Rd.
Horsham, Pa 19044-1209
domyers@voicenet.com*

Sorry, no column this issue.

PHILADELPHIA METRO

*Justin Linn
1864 Wakeling Street
Philadelphia, PA 19124
cbsrus@yahoo.com
www.vipercomusa.cj.net*

The City of Philadelphia is experiencing a financial program, and may force to close various fire houses. I immediately thought about the 52 million dollar radio system, that the city purchased from Motorola a couple years ago. It is not clear exactly how much money had to be added, to provide a safe system for the end-users, but I was informed that more money had to be spent on upgrades to the zone controllers.

Meanwhile, we have been fortunate to be provided with a live link to the new 800MHz digital system, by SEPTA Police Radio. SEPTA Police use 502.6875, with a link to the city's J-band. This is only a RX link, but is nice for those who do not have a digital capable scanner. J-band is the talkgroup where all of the priorities are simulcasted to. This includes: rapes, robbery, large thefts, robbery alarms, bank alarms, police pursuits, and assist. It is also used when there is a caller on the phone being followed or following someone else.

(NOTE: All information below was gathered, and verified by me. All information is correct to my knowledge.)

HAM Repeaters

Philadelphia 145.270 -
Philadelphia 443.100 + (131.8 RX)
Philadelphia 145.410 - 131.8
Philadelphia 449.775 - 141.3
Newtown Sq 147.060 +
Newtown Sq 147.195 +
Cherry Hill 145.370 - 91.5
Abington 147.270 +
Camden 146.820 - 131.8
Camden 444.300 + (131.8 RX)

Philadelphia Police

867.4125 - Philadelphia Police Simplex
867.4375 - Philadelphia Police Simplex

1037 - Intoxicated Driver
302 - Mental Patient
369 - Off-Duty Officer
5292 - Dead Body
75-48 - Incident Report
AA-45 - Accident Report
Assist - A Priority Call for Assistance
Back - Back in Service
CCI - Confidential Caller Information
CFCF - Curran-Fromhold Correctional Facility
CRD - Call Radio Dispatcher
CRD 12xx - Call Console
CRD 3128 - Front Desk
DBP - Dispersed by Police
DC - District Command
DC Numbers - Numbers that are automatically generated for incidents
DK - Intoxicated Pedestrian
Fire Board - Fire Department
Futher - Addition to a previous incident report
GOA - Gone on Arrival
GRM - General Radio Message
HCN - Hospital Case - No Police Needed
IVU - Investigate Vehicle Unattended
Local - Fire or Gas Leak
MDT - Mobile Data Terminal
Message Delivery - A message sent from the district by an officer to be delivered to someone
NAT - Necessary Action Taken
NCIC - National Crime Information Center
Out - Out of Service Personal - 10 minute bathroom break
PDU - Philadelphia Detention Unit
Rescue - Philadelphia Fire Dept
Medic Unit RTF - Report to Follow
Sick Assist - Medical Assistance
Squatter - Person in an abandoned house
UNF - Unfounded
FTA - Failure to Appear – Example: "Well, he's coming back to a good ID card only, he also has a FTA for a theft in Bensalem"
"Send it Down/Over" : Telling the dispatcher to send the incident to their MDT.
Guard for Prints : Telling units to guard an item that will get finger printed.
FAL - False Alarm Flash - Description of an item, car, or person.
Tender Age - A child 10 years or younger. You will sometimes hear them say it for children who are older, but technically is 10 years and younger.

Thermal - Units asking air unit to do a thermal of an area to locate someone.

Bleeder - Exactly what it says/A person who is bleeding.

Illegal Parker - Car Parked Illegally.

Do'er - Someone who commits a crime. Passerby'er - Someone who rode past a crime/incident.

2nd Party Caller - Someone calling 911 for someone else.

3rd Party Caller - Someone who is calling for someone else, that told them to call for 911.

Strong-Arm Robbery - A robbery that was committed by force of body.

Report - Telling a officer to report to their headquarters.

"No more radio or MDT Transmissions in the area of...." - Usually when there is a bomb threat or an actually bomb in the area.

"Just a report of" - Telling radio that they will just make a report of something.

Reporting Off - Telling radio they are going into headquarters at the end of their tour.

Submission from Kel Taylor:

Recent budget cuts have forced the Philadelphia Fire Department to close some of its fire stations and increase a number of Medic units on the street. If this recommendation goes into action, the following will be removed from service:

Engine 1 at 711 S. Broad St. (Center City)

Engine 8 at 4th and Arch Sts. (Old City)

Engine 28 at Belgrade and Ontario Sts. (Port Richmond)

Engine 39 at Ridge Ave. and Cinnaminson St. (Roxborough)

Ladder 1 at 1541 Parrish St. (Fairmount)

Ladder 2 at 4th and Arch Sts. (Old City)

Ladder 11 at 12th and Reed Sts. (Wharton South)

Ladder 16 at Belgrade and Huntingdon Sts. (Port Richmond)

These units are being relocated:

Field Comm 1, from 4th and Arch Sts. (Old City) to 10th and Cherry Sts.(Chinatown)

ES-4, from Washington and Moyamensing Aves. (Bella Vista) to 21st and Market Sts (Rittenhouse Square)

Rescue 1, from 4th and Girard Ave (Ludlow) to 4th and Arch Sts. (Old City)

Ladder 10, from Kensington and Castor Aves (Juniata) to Belgrade and Ontario Sts. (Port Richmond)

Ladder 14, from 26th and York Sts. (Strawberry Mansion) to 28th and Thompson Sts. (Brewerytown)

Ladder 23, from 10th and Cherry Sts. (Chinatown) to 4th and Girard Ave. (Ludlow)

These new medic units will go into service:

63rd and Lancaster Ave. (Overbrook)

4th and Snyder Ave. (South Phila.)

1541 Parrish St. (Fairmount)

Belgrade and Ontario Sts. (Port Richmond)

Belgrade and Huntingdon Sts. (Port Richmond)

Washington and Moyamensing Aves. (Bella Vista)

4th and Arch Sts. (Old City)

Foulkrod and Langdon Sts. (Summerdale)



Philadelphia – KYW-TV3 (CBS) ENG news van en route to another assignment after a live feed. *Photo by Alan Cohen*

CENTRAL PENNSYLVANIA *Column Editor Wanted*

*Interested individuals are encouraged to contact us at:
ScannerDigest@usa.com*

State and local police serve county residents State police and 16 municipal police departments protect Cumberland County residents and property. The more populated communities in the eastern half of the county have their own police departments, while most of the western half of the county relies on state police. State police are responsible for patrolling the heavily traveled interstates and the Pennsylvania Turnpike as well as responding to calls in municipalities that lack a local police force. Troopers from Carlisle, Newville and Harrisburg state police barracks patrol parts of the county, including Interstates 81 and 83 and the turnpike.

The following municipal police departments employ more than 200 police officers, including some part-timers:

Camp Hill “ Chief Gregory Ammons oversees 11 full-time officers, including himself.

Carlisle “ Chief Stephen L. Margeson oversees 33 full-time officers, including himself.

East Pennsboro Township “ Chief Dennis McMaster oversees 18 full-time officers, including himself.

Hampden Township “ Chief Kenneth Fetrow oversees 19 full-time officers, including himself.

Lower Allen Township “ Public Safety Director Frank E. Williamson Jr. oversees the Chief Charles Snyder Jr. They oversee 20 full-time officers, including themselves and 17 part-time community service officers who cannot make arrests but can handle non-emergency calls.

Mechanicsburg “ Chief David Spotts oversees 15 full-time officers, including himself.

Middlesex Township “ Chief Barry Sherman oversees eight full-time officers, including himself, and nine part-timers.

Mt. Holly Springs “ Chief Darrell Goodhart oversees two full-time officers, including himself, and three part-timers.

New Cumberland “ Chief Oren “Bud” Kauffman oversees eight full-time officers, including himself.

Newville “ Chief Vaughn Smith, the only full-time officer, oversees five part-time officers.

North Middleton Township “ Chief Jeffrey Rudolph oversees eight full-time officers, including himself, and two part-timers.

Shippensburg “ Chief Fred Scott oversees eight full-time officers, including himself, and nine part-time officers.

Shiremanstown “ Chief Joseph Owens Sr. oversees two full-time officers, including himself, and four part-timers.

Silver Spring Township “ Acting Chief James Sadler oversees 10 full-time officers, including himself.

Upper Allen Township “ Chief James Adams oversees 14 full-time officers, including himself.

West Shore Regional (Lemoyne and Wormleysburg) “ Chief Howard Dougherty oversees nine full-time officers, including himself, three part-time officers and two civilians.

State Police

State police coverage is broken down as follows:

The Carlisle barracks, which is part of Troop H, is headed by Lt. Dayne Dufford. This station has 45 troopers and four civilians. Officially they are assigned to about 450 square miles of the entire county, but in practice their focus is on an approximately 40-mile stretch of Interstate 81 from the Franklin County line to Interstate 581 and on Cumberland County municipalities without local police protection. Those include North and South Newton, Cooke, South Middleton, Hopewell, Penn, Upper and Lower Mifflin, Upper and Lower Frankford, West Pennsboro, Dickinson, Southampton and Monroe townships and Newburg.

Troop T has 20 troopers, four corporals and a sergeant at the Newville barracks assigned to patrol a 60-mile stretch of the Pennsylvania Turnpike through five counties from Dauphin in the east to Huntingdon in the west. Troopers stationed at the Harrisburg barracks, which is part of Troop H, patrol Interstate 81 in Cumberland County north of the Route 581 interchange and the part of Interstate 83 that goes through Cumberland County. Sheriffs Department

Cumberland County Sheriffs Department, headed by Sheriff Tom Kline, has 24 full-time and 10 part-time deputies in addition to Kline, who works full-time, and five office workers. The sheriffs department performs a variety of duties, including:

Serving warrants and subpoenas and processing bench warrants.

Transporting prisoners.

Providing security at Cumberland County Courthouse and other county facilities.

Issuing licenses to carry and sell firearms and licenses to sell precious metals.

Executing court orders to sell real estate or personal property.

Working with local, state and federal law enforcement agencies and Cumberland County Drug Task Force.

Providing community services such as the out mate work program involving Cumberland County Prison inmates;

Fingerprinting and photographing children to identify them if they become missing; providing DARE drug education for children and TRIAD to prevent crimes against senior citizens.

Dog Law Enforcement

Cumberland County's dog law enforcement officers are John Briner and Donald Newman. Among their duties are picking up stray dogs and enforcing rabies vaccination and licensing laws.

Volunteers provide emergency protection Cumberland County residents benefit from emergency protection from hundreds of volunteers. Thirty-six fire companies protect Cumberland County residents from fire and assist at accidents -- 34 volunteer and two federal installations.

There are 16 municipal police departments (see related story), 13 emergency medical services organizations and 12 of those provide basic life support. West Shore Emergency Medical Services provides all advanced life support for the county. Paid firefighters protect Carlisle Barracks and the Naval Inventory Control Point in Hampden Township. They are federal employees working on federal property but will leave base for mutual-aid calls. Middlesex, Dickinson, Lower Mifflin, Upper Mifflin, North Newton, Cooke, Lower Frankford, Hopewell and Southampton townships have no fire companies. They rely on responses from companies in neighboring municipalities. Volunteer fire companies raise money through municipal government contributions and fund-raisers such as bingo, barbecues and fairs.

The following are the fire companies in Cumberland Co:

New Cumberland Fire Department,
Citizens Fire Co.,
Lower Allen Township Fire Co.,
Camp Hill Fire Co.,
West Fairview Fire Co.,
Midway Fire Co.-Enola,
Citizens Fire Co.-Enola,
West Enola Fire Co.,
Summerdale Fire Co.,
Creekside Fire Co.,
Shiremanstown Fire Co.,
Upper Allen Township Fire Co.,
Lisburn Fire Co.,
Monroe Township Fire Co.,
Citizens Fire Co.-Mechanicsburg,
Washington Fire Co.-
Mechanicsburg, Hampden Township Fire Co.,
Silver Spring Community Fire Co.,
New Kingstown Fire Co.,
South Middleton Township Fire Co.,
Citizen's Fire Co.- Mt. Holly Springs,

Naval Inventory Control Point Fire Department,
Carlisle Barracks Fire Department, North
Middleton Township Fire Co.,
Cumberland-Goodwill Fire and Rescue, Carlisle,
Union Fire Co.-Carlisle,
Friendship Fire Co.-Carlisle,
Empire Hook and Ladder- Carlisle,
West Pennsboro Township Fire Co.,
Friendship Hose Co.- Newville.
Upper Frankford Township Fire Co.,
South Newton Township Fire Co.,
Penn Township Fire Co.,
Newburg-Hopewell Township Fire Co.,
Vigilant Hose Co.- Shippensburg,
Cumberland Valley Hose-Shippensburg,
West End Fire and Rescue- Shippensburg.

Wormleysburg Fire Co. and Lemoyne merged in 2002 to become the West Shore Bureau of Fire.

Basic life support (BLS)

Many fire companies used to maintain their own ambulance service -- also known as "basic life support" units. But now more BLS units are becoming independent, nonprofit corporations housed in fire stations. BLS units provide first aid, CPR and some immediate medical treatment. They are supported by yearly dues from members and fees charged to nonmembers. Some receive support from municipalities. In most cases, nonmembers are charged the full cost of treatment plus mileage for a BLS call while members are charged nothing or reduced fees. An additional charge may be imposed for medical supplies such as oxygen, bandages and "burn sheets."

Advanced life support (ALS)

Advanced life support or ALS units, staffed by paramedics, provide critical emergency care to victims of auto, industrial and farm accidents, fires and other life-threatening medical emergencies. Paramedics are authorized to carry out emergency medical procedures that BLS services are not allowed to provide. ALS paramedics can provide electrocardiograms, intravenous medication, airway control, defibrillation and other critical-care procedures.

West Shore Emergency Medical Services serves most of Cumberland County as well as northern York County and all of Perry County and northeastern Franklin County. The company has Cumberland County units based in Lower Allen, Upper Allen and Hampden townships, Shippensburg Borough and Holy Spirit and Carlisle hospitals. In Perry County, units are stationed at Duncannon and Perry Health Center near Loysville. West Shore EMS also operates mobile intensive care units based at Carlisle Hospital, Carlisle's Cumberland-Goodwill Fire and Rescue Co. and Upper Allen Township Fire Co.

The Cumberland-Goodwill unit is a result of a working partnership between Carlisle Community Ambulance and West Shore EMS. The unit based at Carlisle Hospital is used primarily for non-emergency transfers.

West Shore EMS also has a partnership with Yellow Breeches EMS. Yellow Breeches serves Mt. Holly Springs, Boiling Springs and parts of South Middleton, Penn, Cooke, Dickinson and Monroe townships and part of northern Adams County. In addition, West Shore Emergency Medical Services offers wheelchair van and invalid coach service. This is not included in membership fees. If an ALS unit responds to an incident involving non-members requiring medical attention, the patients are

billed for the response. The base rate is \$330. If an ALS unit responds but is not needed, there is no charge. Members are not charged for ALS services. ALS memberships are a flat fee generally collected through BLS units. The ALS portion of a combined ALS/BLS membership is \$25 per individual or for a household. For a combined membership, it's \$50 per individual and \$55 for a household. Those figures are for West Shore EMS first-due response areas.

Life Lion Aeromedical Services operate helicopters for severely injured patients who need immediate critical or trauma care. Life Lion transports patients to trauma centers. The fee for Life Lion services varies. Other specialists Also based in Cumberland County are a number of organizations that respond to special emergency situations. Most are staffed by volunteer firefighters who have taken advanced training.

These include:

- * A search and rescue team and mass casualty team;
- * Water Rescue of New Cumberland, stationed at 12th and Market streets in New Cumberland, for water rescues;
- * Cumberland County Hazardous Material Team, based in Cumberland County Office of Emergency Preparedness at the county prison in Middlesex Township.

It provides initial response and stabilization for chemical spills and other hazardous materials incidents. Staff and equipment are stationed at Wormleysburg Fire Company, Citizens Fire Company of Lemoyne and Vigilant Hose Company of Shippensburg.

=====

The following was submitted by P Kirk
pkirk@incidentpage.net

HARRISBURG

Dauphin County Fire (dispatches for that area)

Fire			
F-1	33.8000 CSQ	Page / Dispatch / Cmd / Response / Operations	Fire
F-2	33.9000 203.5	Mutual Aid / CSQ is used by:York, Lancaster, Lebanon Co. FD/EMS	PAGE / Dispatch Fire
F-3	33.8400 CSQ	FireGround 1	Fire
F-4	33.8600 CSQ	FireGround 2	Fire
F-5	33.5000 203.5	FireGround	Fire
F-6	33.9600 203.5	Hershey FD FireGround / Private	Fire
F-7	33.6800 203.5	Hershey FD TAC 2	Fire
F-8	33.5200 203.5	Hershey FD Cmd / TAC 3	Fire
F-9	33.7600 203.5	Middletown FD Dispatch / Ops	Fire
F-10	33.9200 203.5	Airport FireGround / OPS	

Handheld UHF Vehicle Repeaters

1. Hershey FD 60.6125 CSQ
2. Middletown FD 60.5500 203.5

Harrisburg City FD

F-1 / F-2	Dispatch / Ops	453.7000	203.5
F-3 / F-4	FireGround	453.9750	203.5
F-5 / F-6	FireGround	460.6000	203.5

Dauphin County EMS

MED-9	Dispatch / PAGE / OPS	462.9500	203.5
Hershey area AMB / EMS / MEDIC	AMB Co. 4		

PRIVATE FREQ 463.5750 186.2

Hershey Park Arena & Stadium Freqs

Operations	464.2750	192.8
Paging	464.4000	192.8
Security F-1	464.1500	192.8
Security F-2	464.4250	192.8
First Aid	464.3750	192.8

Dauphin Co. Police

F-1	Dispatch 1	460.0750	203.5
F-2	Dispatch 2	460.0500	203.5
F-3	Traffic/NCIC	460.1000	203.5
F-4	TACTICAL	460.2250	203.5
F-5	Dispatch 3	460.0250	203.5
F-6	Other	460.1250	203.5

Derry TWP Polics Dept. (Hershey Town)

F-7	Operations	460.1750	203.5
F-8		460.4875	203.5
F-9		453.6000	173.8
F-12		460.4750	CSQ

Capitol Police:

F-1	453.3000 - State Capitol Police (Dispatch)	PL- 192.8
F-2	453.1000 - State Capitol Police (Secondary)	PL - 192.8
F-3	453.5500 - State Senate - Security	PL - 192.8
F-4	453.5500 - State Senate - Security	PL - 156.7

Harrisburg City Police:

F-1	460.2750 Disp / Operations	PL 203.5
F-2	460.3000 NCIC / Ops 2	PL 203.5
F-3	460.3500 OPS 3	PL 203.5
F-4	460.3875	
F-5	460.4375	
F-6	460.2250 Tactical	PL 203.5

P Kirk

EASTERN PENNSYLVANIA

*Steve Bower Jr.
 POB 942
 Fogelsville PA 18051-0942
 Steve1Radio@aol.com*

Hello everyone and welcome to this edition of Scanner Digest. Well this is the second time re-typing this article due to it didn't save for some reason the last time. I am still looking for your help out there on what you would like to see in the articles. I have a PO Box address and e-mail available for you to contact me with. Let me know what you want to see out there!!

We all have our own hidden and personal lists that we use when we travel or go outside our normal scanning area. Our family has traditions of going to area parks like Knoebels Groves, Hershey Park, etc.. This is what we have compiled from just those trips and help from some readers. Since that time of the year is soon approaching us:

Cedar Fair LP (Dorney Park & Wild Water Kingdom)
 Allentown, Pa. (Lehigh County)

CH.1	151.8650	Administration
CH.2	151.5800R	Security & Medical
CH.3	152.8850R	Operations
CH.4	154.6000	Water Park – Operations

CH.5	152.9600R	Maintenance
CH.6	159.7800R	Games & Food Services
CH.7	154.5400	Security – Traffic/ parking
CH.8	151.6850	Public Relations
CH.9	151.8350	Security
CH.10	151.9550	Games & Foods – Secondary
CH.12	151.6550	Security – Desk Channel

151.8050	Operations – Secondary
154.5150	Maintenance – Secondary
Receive Freq:	Transmit Freq:
151.5800	159.8550
152.8850	160.1700
152.9600	160.1100
159.7800	151.5500

These were current as of 04' season, I am curious to see if they will change the Water Park frequency since they got rid of most of the Multi-Use Radios frequencies they were using.

Hershey Park Entertainment

Hershey, Pa. (Dauphin County):

464.1500	Security/ Operations
464.4250	Security/ Traffic Control
461.4875	Operations/ Ticket Control
461.3125	Operations
463.8500	Shuttle Trams
464.2750	Maintenance
463.8625	Maintenance – Secondary

(There are others we are still trying to confirm for the park)

H & H Knoebels Groves Park

Elysburg, Pa. (Northumberland County)

151.7150	Security & First Aid
151.6850	Security/ Parking Control
151.9250	Security/ Tactical
151.8650	Operations
151.8950	Maintenance
154.5150	Foods Service
151.7450	Foods Service/ Groves Area

Pocono Raceway

Long Pond, Pa. (Monroe County):

CH.1	463.9000R	Security Control *
CH.2	464.4250R	Security – Administration
	463.6500R	Maintenance
	461.4000	Operations
	453.4500	EMS Command
	154.7550	PSP CH.11 – Command Post
	123.0500	Helicopter Co-ordination
	454.0000	MRN Radio (Announcer PA System)

* You can here Headquarters 2 and NASCAR Tower on these frequencies. These are not listed in any racing guide you may buy at the track.

Nazareth Speedway

Nazareth, Pa. (Northampton County):

452.8500R	Security/ Gate Control
457.0750	Security Patrol
457.3000	Maintenance/ Operations
469.4750	Guest Services

Ch.1	461.6375	US Auto Club - Officials
Ch.2	463.5250	US Auto Club
Ch.3	466.6875	US Auto Club – Scoring & Tower

(Any help for up here would be appreciated, I think they are using the Racing Radio Inc system but there are so many licensed to them.)

Williams Grove Speedway

(Cumberland County):

151.6250	Safety & Scoring
154.6000	Operations

(This is a ½ mile oval dirt track used for sprint car racing)

That should do it for our Vacation summer time listings, Let me know of any I've missed. I have a LEHIGH COUNTY UPDATE: Fire – North 158.2500R should be up and running by the time you receive this Digest. They have been testing it for the last couple weeks of March and looks like it should be up and running by April 1st. It is not sure of the faith of 154.2200 cross-band frequencies. It was used as Highband Repeater for Fire police in Upper Macungie & South Whitehall townships.

Here are some Berks County frequencies listed below from the Public Safety lines, Berks has a pretty good dispatch coverage area with a lot of frequency zones and cross band repeated systems from lo-band to VHF Highband.

33.9400	Fire Dispatch & Response
33.6800	Fireground “3368”
33.8000	Fireground “3380”
154.2950	Fire Dispatch – Crossband East
154.1900	Fire Dispatch – Crossband West
154.3100	F-1 Zone 4 Fire Dispatch
154.4000	F-2 Zone 4 Fireground
154.1600	F-3 Zone 4 Fireground
154.3550	F-4 Zone 4 Fireground
460.5875	Fire Dispatch – Crossband West
151.2200R	Berks County HazMat Team – PL 88.5
151.2200R	Berks County Emergency Mgmt – PL 250.3
154.3850	Berks County Firepolice Assn Ch.1
153.9500	Berks County Firepolice Assn Ch.4
154.2650	Berks County Firepolice Assn
153.8300	Berks County Firepolice Assn.
159.2700	Berks County Firepolice Assn. (Input to 154.3850)
453.9500R	Fire Dispatch – Crossband East (Topton Fire Co)
154.4300	City of Reading – Fire Dispatch
154.2050	City of Reading – Fireground
155.2950	Berks Co Ambulance Dispatch & Response
155.1600	Berks Co Ambulance “160 Talk around”
155.2200	Berks Co Ambulance “220 Hospital”
155.3400	Berks Co Ambulance “340 Regional”
155.0700	Berks Co Police F-1 Dispatch
155.0100	Berks Co Police F-2 Scope
155.2500	Berks Co Police F-3 North East
151.2200	Berks Co Police South East - PL 186.2
159.4650	Berks Co Sheriff Office
155.5950	Berks Co Sheriff Office
154.1000	Berks Co Parks & Rangers
154.1000	Berks Heim – Elderly Home
153.7400	Berks County Prison
153.8000	Berks County Prison
153.8750	Berks County Prison

Well that should do it for now, Wanted to say thanks to Marty Ripkee for some of this information. I will continue the list in the next edition. Hope you all have a good long waited summer. Till next time Be Safe & Take Care.... Steve

=====

The following information on the Pennsylvania Turnpike was submitted by Ben Russell

Anyway, to elaborate a little bit on the turnpike (mileposts approximate):

District 1

MP 0-110
Dispatch: 159.045
PSP Gibsonia (T1)
PSP New Stanton (T2)
Maintenance Sheds:
Western Regional Office/Homewood
Gibsonia
Harrison City
Greensburg
Jefferson
Donegal

District 2

MP 110-201
Dispatch: 159.075
PSP Somerset (T3)
PSP Everett (T4)
Maintenance Sheds:
Somerset
Kegg
Allegheny Tunnel
Everett
Burnt Cabins
Tuscarora Tunnel
Blue Mtn./Kittatinny Tunnel

District 3

MP 201-298
Dispatch: 159.045
PSP Newville (T5)
PSP Bowmansville (T6)
Maintenance Sheds:
Newville
New Cumberland
Mt. Gretna
Bowmansville

District 4

MP 298-359
MP 20-41 (NE Extension)
PSP Bowmansville (T6)
PSP King of Prussia (T7)
Maintenance Sheds:
Devault
Eastern Regional Office/Plymouth Meeting
Trevose

District 5

MP 41-131 (NE Extension)
Dispatch: 159.045
PSP Pocono Station (T8)
Quakertown

Slatington
Lehigh Tunnel
Pocono
Wyoming

The "T" numbers are found on the front quarter panel of the PSP patrol vehicle, next to the vehicle number. The vehicle number would be what you are hearing when they call on the radio (i.e. Somerset 5 would be the vehicle marked with T3 5). Of course, there are also unmarked cars that they use, but they follow the same pattern, just without the visible markings on the vehicle. Out in the east (from Newville through KoP and Pocono), PSP patrols routinely refer to "zones". The zones are patrol zones. "99" would be the roving car not assigned to a specific patrol zone. The other numbers would refer to a specific zone that makes up a portion of the overall patrol territory for that station. I do not know what all the zone numbers are for each station. King of Prussia uses the following:

- 20 - east/west MP 298 to MP 312
- 21 - east/west MP 312 to MP 326
- 22 - east/west MP 326 to MP 343
- 23 - east/west MP 343 to MP 359
- 24 - north/south MP 20 to MP 38
- 25 - north/south MP 38 to MP 57.4
- 99 - unassigned roving patrol

Bowmansville uses 17, 18, and 19 for their zone designations. I'm not sure on the MP limits of each. Maintenance sheds have gone to a "plain speak" system over much of the turnpike (maybe all of it buy now? I don't go west of Carlisle.). Whereas you used to hear 3103 or 3104 for the Newville Shed supervisors, you'll now hear them call out as Newville 41 or Newville 42. As with the PSP patrols, each maintenance facility has its own designated coverage area. The "Shedname"-100 ID is the primary responder vehicle for accidents and whatnot.

PTC vehicles (not PSP Troop T) use the following:

- 0001-0999 - Misc. Harrisburg Admin. (HQ)
- 3600-3699 - PTC Pool Vehicles
- 5100-6199 - District 1 Administrative Personnel
- 5200-6299 - District 2 Administrative Personnel
- 5300-6399 - District 3 Administrative Personnel
- 5400-6499 - District 4 Administrative Personnel
- 5500-6599 - District 5 Administrative Personnel
- 7000-7999 - Off Turnpike Fire/EMS Vehicles
- 8000-8999 - Off Turnpike Authorized Tow Services
- 9100-9199 - District 1 Call Box/Radio Maint., TRANSCORE
- 9200-9299 - District 2 Call Box/Radio Maint., TRANSCORE
- 9300-9399 - District 3 Call Box/Radio Maint., TRANSCORE
- 9400-9499 - District 4 Call Box/Radio Maint., TRANSCORE
- 9500-9599 - District 5 Call Box/Radio Maint., TRANSCORE
- 9600-9699 - Misc TRANSCORE Call Box/Radio Maint. Staff
- Shed Name-41 - Foreman
- Shed Name-42 - Asst. Foreman
- Shed Name-43 - Asst. Foreman
- Shed Name-4x - Misc. Pick-up Trucks
- Shed Name-5x - Misc. Stake-body or Crew-cab Trucks
- Shed Name-100 - First Responder Vehicle
- Shed Name-1xx - Misc. Heavy Equip. (dumps, etc.)
- Shed Name-2xx - Misc. Trades (electricians, etc.)
- Shed Name-800 - Auto Equip. Supervisor

Ben Russell

NEW HAMPSHIRE

*John Bolduc
c/o Scanner Digest
POB 207 Jamison PA 18929
<http://www.geocities.com/nhswna>
NIQGS@yahoo.com*

Hillsborough County Dispatch for Greenville Fire and Mason Fire is on. The VHF-High Band link for 33.740 (136.5) has changed to 154.3925 (173.8), it has changed from 154.2125 (173.8).

154.3925 (179.9) used to link 33.640 when Greenville was dispatched by MACC Base (Milford Area Communications Center) on 33.640 (136.5)

Salem NH Fire Rescue move to a new repeater site for their 158.8125 (97.4) dispatch channel is due to be in place by the end of July 2004. While still located on Spicket Hill, the site will no longer be at the water tower due to impending development on the hill with several lots falling with the previously planned fall zone. The current dispatch channel is tough to hear from the current dispatch site at Central Station. The administration channel, the former dispatch channel, on 154.385 (136.5) as well as the police repeater 155.730 (136.5). can be heard very well for quite a distance from water tower location transmitter site. Don't ask me to make sense out of why they just don't use this site for the current fire dispatch channel.

Lyndeborough NH is now being dispatched by Southwest NH District Mutual Fire Aid on 154.430 (136.5). Lyndeborough was by MACC Base on 33.640 with unit ID's of 16xx. They are assigned 82xx on Southwest.

Amherst will also be leaving MACC Base. They have investigated several dispatch options, including Southwest, Derry, and dispatching themselves.

Lakes Region radio maintenance was heard testing 154.9875/D331

Lebanon NH Fire is now operating on 151.235/141.3. They left 153.890 about four months ago. Lebanon also dispatches for Enfield and Canaan. These operations are believed to still be on 154.130. Lebanon Police on 155.250 simplex switch over to 100% digital mode in early February 2004.

Low band up to 80 MHz was wide open on February the 12th.. Low band police and other agencies were quite prominent until around noon time. Nashville TN television station channel 2,4, and 5 were wiping out the Boston local stations on the rabbit ears.

Vernon Vermont has moved to high-band on 154.430, still being dispatched by SWNH. They have changed their unit numbers from 41 to 51 Williamsville VT still has unit numbers of 41.

Hollis Fire now being dispatched on 151.475 (151.160 in) with a PL tone of 127.3. In the near future transmit site will be moved to Birch Hill in northwest Hollis and connected via new UHF links - For now Brookline(dispatch by Hollis) is still on 453.3625 (103.5) with cross-band link to 33.640 (136.5)

Milford Police has been heard using 155.7825 in P-25 digital mode.

A Deering NH town meeting vote has switched their fire department dispatch. Deering currently is dispatched by the town

Hillsborough on 154.310. The will switch to Capital Area Mutual Aid on 154.355. Deering retains the license for 154.310. It is believed they will keep their current ID number of 84, since it does not conflict with the Capital Area numbering system.

Anheuser-Busch Merrimack Plant is now operating a trunked system

Motorola Type-II Fleet Code: 6611
859.3375 / 856.3125 / 857.3125 / 858.3125 / 859.3125

Private Snow Plowing heard during storm of 3/16/04 in Derry NH region 461.125 / 146.2 461.300 / trunked 464.625 / 107.2 462.600 / 94.8 463.800 / d043 464.300 / 110.9 464.325 / 123.0 464.7125 / 156.7

That's it for now! 73's John

VERMONT

*Jim Lawrence
c/o Scanner Digest
POB 207 Jamison PA 18929
ScannerDigest@usa.com*

Greetings again from Vermont where the nicer weather has returned and the peepers are filling the night air with their frenzied cries welcoming Spring.

Springfield Area Fire

Springfield Fire Department appears to have moved to a new dispatch frequency, according to a listener in that area. They are being heard now on 155.4000 and have reportedly stopped using 46.0800. There are other departments in that area that use 46.0800. Weathersfield fire has also been reported on 158.7450, Windsor dispatch. And the FCC records for Ludlow fire show them licensed on 154.7325 and 159.0525. If you monitor fire comms in that area, I'd love to hear from you. Please drop me a line here at Scanner Digest.

FPS Expands in Vermont

The US government's Office of Federal Protective Service has expanded their radio system in Vermont. They can be heard on 417.2000 using P25 encoded and encrypted voice comms. I have yet to hear any analog comms here.

Military Air Refueling Over Vermont

Vermont is located right under airspace that is used by the US military to conduct air refueling operations. And these operations go on day and night all year 'round. The most often used frequencies in use over Vermont and New Hampshire on 238.9000, 324.6000 and 295.8000. Air refueling operations also occur over neighboring states and the radio signal from these flights reach many parts of Vermont. Operations over New Hampshire occur on 319.7000 and over eastern NY they can be heard on 235.1000. If you have a receiver capable of turning 225 - 400 MHz in AM mode, you'll find these communications very interesting. There's nothing like branching out into new areas of listening to really energize your interest in the utility monitoring hobby.

And that's it this time from Vermont. Jim

NORTHEASTERN OHIO

Mike Fink
c/o Scanner Digest
POB 207 Jamison PA 18929
admin@ohioscan.com
www.ohioscan.com

We welcome in 2004 with a frequency change for the Berea Police Dept in Cuyahoga County Ohio. The Berea PD has switched over to their own dispatch frequencies.

156.210R\154.710M

BEREA, CITY OF POLICE KQB393
154.710M CH1
156.210R CH1 DISP -PL-110.9 "16xx Units"
155.370 CH2
155.850 CH3
155.535 CH4

In Medina County the Townships of Medina & Montville have switched dispatching contracts to the City of Medina as of December 31, 2003

MEDINA, CITY OF POLICE KNAL728
PW - PUBLIC SAFETY POOL
150 W FRIENDSHIP ST
MEDINA OH 44256-1896

LOC. 1. 5800 S COURT ST MEDINA, MEDINA OH
LOC. 2. AREA OF OPERATION OPERATING WITHIN A 08.0 KM RADIUS AROUND 41-6-52.2 N 81-51-53.5 W, MEDINA, OH.
LOC. 3. LAND MOBILE CONTROL STATION MEETING THE 6.1 METER RULE:
LOC. 4. AREA OF OPERATION OPERATING WITHIN A 08.0 KM RADIUS AROUND FIXED LOCATION NUMBER 1.
LOC. 5. LAND MOBILE CONTROL STATION MEETING THE 6.1 METER RULE:
1. 460.325 FB2 1 CH2 -PL-141.3
460.450 FB2 1 CH1 DISP -PL-141.3 "2xx Units"
2. 460.325 MO 20
465.325 MO 20
3. 465.450 FX1 1
4. 460.450 MO 20
465.450 MO 20
5. 465.325 FX1 1
CONTROL POINTS: 150 W FRIENDSHIP ST MEDINA, MEDINA OH
(ALSO DISP FOR MEDINA LST
MEDINA TWP "15XX"
MONTVILLE TWP "16XX"

The Regional Sun newspaper has an article on manpower levels for Westside Cuyahoga police departments and found most remain at full levels with only Strongsville & Parma operating below acceptable levels. Parma has been hit the hardest, officer-to-population ratios show Parma should have around 130 officers. The Chief thinks 115 would suffice but the current 94 full-time officers has meant unit cuts and disbandment of specialty units like the traffic patrol. Strongsville PD levels stand at 77 having lost 7 officers since 2001. Strongsville has delayed equipment purchases and disbanded the dedicated traffic units. A study done 2 years ago shows the national average of about 2.5 officers per 1000 residents. The FBI statistics put the ratio anywhere from 1.8 to 3.2 per 1000.

DEPT FULL-TIME OFFICERS PER 1000 RESIDENTS

DEPT	#	%
BEREA	32	1.7

BROOKPARK	44	2.1
MIDDLEBERG HTS	34	2.2
N.ROYALTON	41	1.4
OLMSTED FALLS	12	1.5
OLMSTED TWP	17	1.6
PARMA	94	1.1
PARMA HTS	34	1.6
SEVEN HILLS	19	1.6
STRONGSVILLE	70	1.6

Although none of the suburbs are experiencing anything like the draconian cuts hitting the City of Cleveland public Safety units. The Cleveland PD will lose over 250 officers, the FD will lose 70 personal and EMS will lose none due to Union concessions on overtime. The Firefighters union also compromised on uniform allowances and overtime which saved over 80 jobs. The Policemens union could of saved over 90 jobs with similar concessions but they voted down all the cities offers, 36% of the cities general budget is used to fund the PD. The only positive in this is cities around the country have been in town recently trying to recruit officers. Anchorage Alaska wants 20, over 50 took the test for positions in Atlanta. Cities save between \$57,000 to \$80,000 by hiring already trained personal. So needless to say don't plan on Cleveland upgrading there Motorola ASTRO VSLEP TRS to anything monitorable in the near future. Until then you can monitor the Cleveland Public Safety at:

<http://www.cleveland.com/policescanner>

There is positive note, the City of Brookpark has received a federal grant to improve communications on the Southwest Regional Communications Network. The 350ft tower at Boston & Pearl Rd in Strongsville was erected almost 15 years ago. Although made available to other southwest cities only Strongsville, North Royalton and Parma Heights have chosen to join the SWRCN. Planned in the upgrade are new repeaters, antennas and computer equipment. Prior to the grant, participating cities paid according to there usage. Brookpark uses 216 radios, Strongsville 165, Parma Heights 137 and North Royalton Fire 36.

I recently received a request for some coverage in Franklin County area so here is a bit of what I have and some references to site covering that region.

BEXLEY, CITY OF POLICE KJC964
PW - PUBLIC SAFETY POOL,
2242 E MAIN ST
BEXLEY OH 43209
LOC. 1. 2242 E MAIN ST BEXLEY, FRANKLIN OH
LOC. 2. AREA OF OPERATION OPERATING WITHIN A 40.0KM RADIUS AROUND FIXED LOCATION NUMBER 1. 1. 155.370 FB 1
453.500 FB2 1 DISPATCH -PL-141.3
2. 453.500 MO 80
458.500 MO 80
460.500 MO 80
465.425 MO 80
CONTROL POINTS: 2242 E MAIN ST BEXLEY, FRANKLIN OH

GAHANNA, CITY OF POLICE KQJ234
PW CONVENTIONAL PUBLIC SAFETY POOL
460 ROCKY FORK BLVD
GAHANNA OH 43230
A:155.370 FB 1
460.225 FB 1
460.350 FB 1 DATA
453.700 FB2 1 CH1 DISP -PL-131.8

460.225 FB2 1 DATA
B:453.700 FB2 1
G:155.370 MO 20
458.700 MO 20
460.225 MO 50
460.350 MO 50
465.225 MO 50
465.350 MO 50
TRANSMITTER STREET ADDRESS CITY COUNTY
A: 460 ROCKY FORK BLVD GAHANNA FRANKLIN
B: 1693 TAYLOR STATION BLVD GAHANNA FRANKLIN
AREA OF OPERATION
SITE G: OH COUNTYWIDE: FRANKLIN
CONTROL POINTS: 460 ROCKY FORK BLVD GAHANNA OH

GRANDVIEW HEIGHTS, CITY OF POLICE
GP CONV. PUB. SAFETY/SPECIAL EMERG. WNVA696
1016 GRANDVIEW AVE
COLUMBUS OH 43212
A:855.2375 FB2 1 PD DISPATCH -PL-162.2
855.7375 FB2 1 FD DISPATCH -PL-162.2
B:855.2375 FB2 1
855.7375 FB2 1
G:810.2375 FX1 1
810.7375 FX1 1
H:810.2375 MO 43
810.7375 MO 43
855.2375 MO 43
855.7375 MO 43
TRANSMITTER STREET ADDRESS CITY COUNTY
A: 1000 URLIN AVE COLUMBUS FRANKLIN
B: 1016 GRANDVIEW AVE COLUMBUS FRANKLIN
G:
AREA OF OPERATION
SITE H: OH COUNTYWIDE: FRANKLIN

MADISON, TOWNSHIP OF POLICE KTP814
PW - PUBLIC SAFETY POOL,
4567 MADISON LN
GROVEPORT OH 43125-9237
LOC. 1. 4567 FIREHOUSE LN GROVEPORT, FRANKLIN OH
LOC. 2. AREA OF OPERATION OPERATING WITHIN A 30.0KM
RADIUS AROUND FIXED
LOCATION NUMBER 1. 1. 460.425 FB 1 CH1 DISP
460.425 FB2 1
460.475 FB 1
460.475 FB2 1
2. 460.475 MO 30
465.425 MO 30
465.475 MO 30
CONTROL POINTS: 4567 MADISON LN GROVEPORT, FRANKLIN OH

NEW ALBANY, VILLAGE OF POLICE WNWB484
GP - Public Safety/Spec
NEW ALBANY OH 43054
Loc. 1. Land Mobile Control Station meeting the 6.1 Meter Rule: OH
Loc. 2. 4400 REYNOLDSBURG NEW ALBANY RD NEW ALBANY,
FRANKLIN OH
Loc. 3. Area of Operation Operating within a 32.0 km radius around fixed
location number 2. 1. 809.98750 FX1 1 2. 854.98750 FB2 1 CH1
DISP
-PL-167.9 3. 809.98750 MO 10 Control Points: 19 E MAIN ST NEW
ALBANY,
FRANKLIN OH

NEW ROME, CITY OF POLICE WNMH895
PL LOCAL GOVERNMENT
30 MAPLE DR
NEW ROME OH 43228
A:453.925 FB 1 CH1 DISP -PL-131.8
458.925 MO 8
TRANSMITTER STREET ADDRESS CITY COUNTY
A: 30 MAPLE DR NEW ROME FRANKLIN
AREA OF OPERATION
SITE A: 40 KMRA 40-02-08N 083-07-59W NEW ROME FRANKLIN OH

CONTROL POINTS: 30 MAPLE DR NEW ROME OH

OBETZ, VILLAGE OF POLICE KNHS876
1611 CHILLICOTHE ST
OBETZ OH 43207
A:460.150 FB2 1 CH1 DISP
460.150 MO 10
460.500 MO 10
465.150 MO 10
465.425 MO 10
B:460.150 FB 1
465.150 FX1 1
TRANSMITTER STREET ADDRESS CITY COUNTY
A: WATER TOWER 4685 GROVEPORT RD OBETZ FRANKLIN
B: 1611 CHILLICOTHE ST OBETZ FRANKLIN
AREA OF OPERATION
SITE A: 24 KMRA 39-52-21N 082-56-43W OBETZ FRANKLIN OH
CONTROL POINTS: 1611 CHILLICOTHE ST OBETZ OH

REYNOLDSBURG, CITY POLICE OF KQH329
PW - PUBLIC SAFETY POOL,
7240 E MAIN ST
REYNOLDSBURG OH 43068
LOC. 1. 7806 E MAIN ST REYNOLDSBURG, FRANKLIN OH
LOC. 2. 7240 E MAIN ST REYNOLDSBURG, FRANKLIN OH
LOC. 3. AREA OF OPERATION OPERATING WITHIN A 64.0KM
RADIUS AROUND FIXED
LOCATION NUMBER 1. LOC. 4. 6900 E MAIN STREET
REYNOLDSBURG, FRANKLIN OH 1.
460.300 FB2 1 CH1 DISPATCH -PL-131.8
460.375 FB2 1
2. 465.300 FX1 1
465.375 FX1 1
3. 465.300 MO 50
465.375 MO 50
4. 460.375 FB2 1
CONTROL POINTS: 7240 E MAIN ST REYNOLDSBURG, FRANKLIN
OH

WORTHINGTON, CITY OF
GF CONV PUBLIC SAFETY/SPEC EMERG NAT PL WPFR952
6550 N HIGH ST
WORTHINGTON OH 43085
A:866.2500 FB2 1 CH2 FD -DPL423-
866.4875 FB2 1 CH1 PD DISP -DPL114-
866.7625 FB2 1 CH3 MUTUAL -DPL423-
821.2500 MO 100
821.4875 MO 100
821.7625 MO 100
G:821.2500 FX1 2
821.4875 FX1 2
821.7625 FX1 2
TRANSMITTER STREET ADDRESS CITY COUNTY
A: E WILSON BRIDGE RD SOUTHSIDE NEXT TO PENN & NYC
RAILROAD TRACKS
WORTHINGTON FRANKLIN
G:
AREA OF OPERATION
SITE A: 24 KMRA 40-06-30N 083-00-20W WORTHINGTON FRANKLIN
OH
CONTROL POINTS: 374 HIGHLAND AVE WORTHINGTON OH

(FORMER TRUNKRADIO.NET)
<http://www.radioreference.com/>
See this site for most updated ID list

Guide to Central & Southeast Ohio
<http://www.qsl.net/wa8pyr/index.html>

FRANKLIN COUNTY 800MHz TRUNKING

SEE OHIOSCAN TRUNKING SECTION FOR ID's

FCCA - PUBLIC SAFETY

MOTOROLA TYPE II SMARTNET

856.4375	856.4875	856.9375	856.9875
857.4375	857.4875	857.9375	857.9875
858.4375	858.4875	858.9375	858.9875
859.2125	859.4375	859.4875	859.9375
859.9875	860.2125	860.4375	860.4875
860.9375	860.9875	866.1625	866.4125
866.6625	868.0375	868.4500	868.7750

(FCCA FRANKLIN COUNTY COMMUNICATIONS AUTHORITY)

(WILL EVENTUALLY HANDLE ALL COUNTY PUBLIC SAFETY)

COLUMBUS, CITY OF WNRJ541

YP - PUBLIC SAFETY/SPEC

220 GREENLAWN AVE

COLUMBUS OH 43223

LOC. 1. 30 E BROAD ST COLUMBUS, FRANKLIN OH

LOC. 2. 4250 MORSE RD COLUMBUS, FRANKLIN OH

LOC. 3. 2929 RIVERSIDE DR COLUMBUS, FRANKLIN OH

LOC. 4. 5600 PARSONS AVE LOCKBOURNE, FRANKLIN OH

LOC. 5. 4250 GROVES RD COLUMBUS, FRANKLIN OH

LOC. 6. LAND MOBILE CONTROL STATION MEETING THE 6.1 METER

RULE: OH

LOC. 7. AREA OF OPERATION OPERATING WITHIN A 113.0KM

RADIUS AROUND FIXED

LOCATION NUMBER 1. LOC. 1-5 1. 856.43750 FB2C 1*

856.48750 FB2C 1*	856.93750 FB2C 1*
856.98750 FB2C 1*	857.43750 FB2C 1*
857.48750 FB2C 1*	857.93750 FB2C 1*
857.98750 FB2C 1*	858.43750 FB2C 1*
858.48750 FB2C 1*	858.93750 FB2C 1*
858.98750 FB2C 1*	859.21250 FB2C 1*
859.43750 FB2C 1*(C)	859.48750 FB2C 1*(C)
859.93750 FB2C 1*	859.98750 FB2C 1*
860.21250 FB2C 1*	860.43750 FB2C 1*(C)
860.48750 FB2C 1*(C)	860.93750 FB2C 1*
860.98750 FB2C 1*	

6. 811.43750 FX1 250	811.48750 FX1 250
811.93750 FX1 250	811.98750 FX1 250
812.43750 FX1 250	812.48750 FX1 250
812.93750 FX1 250	812.98750 FX1 250
813.43750 FX1 250	813.48750 FX1 250
813.93750 FX1 250	813.98750 FX1 250
814.21250 FX1 250	814.43750 FX1 250
814.48750 FX1 250	814.93750 FX1 250
814.98750 FX1 250	815.21250 FX1 250
815.43750 FX1 250	815.48750 FX1 250
815.93750 FX1 250	815.98750 FX1 250

7. 811.43750 MO 8000	811.48750 MO 8000
811.93750 MO 8000	811.98750 MO 8000
812.43750 MO 8000	812.48750 MO 8000
812.93750 MO 8000	812.98750 MO 8000
813.43750 MO 8000	813.48750 MO 8000
813.93750 MO 8000	813.98750 MO 8000
814.21250 MO 8000	814.43750 MO 8000
814.48750 MO 8000	814.93750 MO 8000
814.98750 MO 8000	815.21250 MO 8000
815.43750 MO 8000	815.48750 MO 8000
815.93750 MO 8000	815.98750 MO 8000
856.43750 MO 8000	856.48750 MO 8000
856.93750 MO 8000	856.98750 MO 8000
857.43750 MO 8000	857.48750 MO 8000
857.93750 MO 8000	857.98750 MO 8000
858.43750 MO 8000	858.48750 MO 8000
858.93750 MO 8000	858.98750 MO 8000
859.21250 MO 8000	859.43750 MO 8000
859.48750 MO 8000	859.93750 MO 8000
859.98750 MO 8000	860.21250 MO 8000
860.43750 MO 8000	860.48750 MO 8000
860.93750 MO 8000	860.98750 MO 8000

CONTROL PTS: 220 GREENLAWN AVE COLUMBUS, FRANKLIN OH

USERS

CLINTON TOWNSHIP POLICE	FRANKLIN COUNTY SHERIFF
GROVEPORT POLICE	MIFFLIN TOWNSHIP POLICE
HAMILTON TOWNSHIP FIRE	MIFFLIN TOWNSHIP FIRE
NORWICH TOWNSHIP FIRE	PORT COLUMBUS FIRE
PRAIRIE TOWNSHIP FIRE	TRURO TOWNSHIP FIRE
TWV FIRE	UPPER ARLINGTON CITY OF FIRE
WASHINGTON TOWNSHIP FIRE	WESTERVILLE CITY OF FIRE
WHITEHALL CITY OF FIRE	

(WILL EVENTUALLY HANDLE ALL COUNTY PUBLIC SAFETY)

COLUMBUS, CITY OF

YF TRUNKED PUBLIC SAFETY/SPEC EMERG NAT WPIS651

DIV OF COMMUN THOMAS A TRUFANT

220 GREENLAWN AVE

COLUMBUS OH 43223

LOC. 1. 30 E BROAD ST COLUMBUS, FRANKLIN

LOC. 2. 4250 MORSE RD COLUMBUS, FRANKLIN

LOC. 3. 2929 RIVERSIDE DR COLUMBUS, FRANKLIN

LOC. 4. 5600 PARSONS AVE LOCKBOURNE, FRANKLIN

LOC. 5. 4250 GROVES RD COLUMBUS, FRANKLIN

LOC. 6. LAND MOBILE CONTROL STATION MEETING THE 6.1 METER

RULE: OH

LOC. 7. AREA OF OPERATION OPERATING WITHIN A 113.0 KM

RADIUS AROUND FIXED

LOCATION NUMBER 1. LOC. 1-5 1.866.16250 FB2 1*

866.41250 FB2 1*	866.66250 FB2 1*
868.03750 FB2 1*	868.45000 FB2 1*
868.77500 FB2 1*	

6.821.16250 FX1 250	821.41250 FX1 250
821.66250 FX1 250	823.03750 FX1 250
823.45000 FX1 250	823.77500 FX1 250

7.821.16250 MO 8000	821.41250 MO 8000
821.66250 MO 8000	823.03750 MO 8000
823.45000 MO 8000	823.75000 MO 8000
866.16250 MO 8000	866.41250 MO 8000
866.66250 MO 8000	868.03750 MO 8000
868.45000 MO 8000	868.77500 MO 8000

CONTROL POINTS: 220 GREENLAWN AVE COLUMBUS OH

COLUMBUS, CITY OF NIPSAC

GF CONV PUBLIC SAFETY/SPEC EMERG NAT PL WPGR332

220 GREENLAWN AVE

COLUMBUS OH 43223

G:821.0125 MO 3000

821.5125 MO 3000	822.0125 MO 3000
822.5125 MO 3000	823.0125 MO 3000
866.0125 MO 3000	866.5125 MO 3000
867.0125 MO 3000	867.5125 MO 3000
868.0125 MO 3000	

AREA OF OPERATION

SITE G: OH COUNTYWIDE: FRANKLIN

CONTROL POINTS: 1250 FAIRWOOD AVE COLUMBUS OH

COLUMBUS MDT'S (CONVERTING RD-LAP)

Ch1 - 811/856.7625	Ch2 - 812/857.7625
Ch3 - 813/858.7625	Ch4 - 812/857.4625
Ch5 - 810/855.4625	

COLUMBUS, CITY OF

GP CONV. PUB. SAFETY/SPECIAL EMERG. WPGV781

220 GREENLAWN AVE

COLUMBUS OH 43223

G:853.48750 MO 3000

AREA OF OPERATION

SITE G: OH COUNTYWIDE: FRANKLIN

CONTROL POINTS: 1250 FAIRWOOD AVE COLUMBUS OH

COLUMBUS MUNICIPAL AIRPORT AUTHORITY

GP CONV. PUB. SAFETY/SPECIAL EMERG. WPQI445

4600 INTERNATIONAL GATEWAY

COLUMBUS OH 43213

A:855.11250 FB2 1

810.11250 MO 60
855.11250 MO 60
TRANSMITTER STREET ADDRESS CITY COUNTY
A: 4600 INTERNATIONAL GATEWAY COLUMBUS FRANKLIN
AREA OF OPERATION
SITE A: 5 KMRA 39-59-53N 082-53-00W COLUMBUS FRANKLIN OH
CONTROL POINTS: 4600 INTERNATIONAL GATEWAY COLUMBUS
OH

DUBLIN, CITY OF WNJP961
YP - PUBLIC SAFETY/SPEC
6565 COMMERCE PKY
DUBLIN OH 43017
LOC. 1. 7697 AVERY RD DUBLIN, FRANKLIN OH
LOC. 2. 4000 HARD RD DUBLIN, FRANKLIN OH
LOC. 3. LAND MOBILE CONTROL STATION MEETING THE 6.1 METER
RULE: OH
LOC. 4. AREA OF OPERATION OPERATING WITHIN A 32.0KM
RADIUS AROUND FIXED
LOCATION NUMBER 1.

- | | |
|--------------------|-----------------|
| 1. 852.0125 FB2 1 | 855.4875 FB2 1 |
| 855.7125 FB2 1 | 855.9625 FB2 1 |
| 2. 855.0125 FB2 1 | 855.4875 FB2 1 |
| 855.7125 FB2 1 | 855.9625 FB2 1 |
| 3. 807.0125 FX1 1 | 810.4875 FX1 1 |
| 810.7125 FX1 1 | 810.9625 FX1 1 |
| 4. 807.0125 MO 240 | 810.4875 MO 240 |
| 810.7125 MO 240 | 810.9625 MO 240 |
| 855.4875 MO 240 | 855.7125 MO 240 |
| 855.9625 MO 240 | |

CONTROL PTS: 6565 COMMERCE PARKWAY DUBLIN, FRANKLIN OH

FCCA - LOCAL GOVERNMENT
MOTOROLA TYPE II SMARTNET
856.2625 857.2625 858.2625 859.2625
860.2625 866.1375 866.2125 866.3875
866.4625 866.7375 867.0875 867.6875
867.9375 868.1500 868.4250 868.6750
868.8125

(WILL EVENTUALLY BE COUNTYWIDE LOCAL GOV SYSTEM)
FRANKLIN, COUNTY OF WPIS650
YF - Public Safety Ntl
Plan, 821-824/866-869 MHz,
373 S HIGH ST COLUMBUS OH 43215
Loc. 1. 373 S HIGH ST COLUMBUS FRANKLIN OH
Loc. 2. Area of Operation Operating within a 113.0km radius around fixed
location number 1. Loc. 3. 6131 HIGHLAND LAKES AVE WESTERVILLE,
DELAWARE OH

- | | |
|---------------------|-------------------|
| 1.866.13750 FB2 1* | 866.21250 FB2 1* |
| 866.38750 FB2 1* | 866.46250 FB2 1* |
| 866.56250 FB2 1 | 866.73750 FB2 1* |
| 867.08750 FB2 1* | 867.68750 FB2 1* |
| 867.93750 FB2 1* | 868.15000 FB2 1* |
| 868.21250 FB2 1 | 868.42500 FB2 1* |
| 868.51250 FB2 1 | 868.67500 FB2 1* |
| 868.81250 FB2 1* | |
| 2.821.13750 MO 1200 | 821.21250 MO 1200 |
| 821.38750 MO 1200 | 821.46250 MO 1200 |
| 821.56250 MO 1200 | 821.73750 MO 1200 |
| 822.08750 MO 1200 | 822.68750 MO 1200 |
| 822.93750 MO 1200 | 823.15000 MO 1200 |
| 823.21250 MO 1200 | 823.42500 MO 1200 |
| 823.51250 MO 1200 | 823.67500 MO 1200 |
| 823.81250 MO 1200 | |
| 3.866.13750 FB2 1 | 866.21250 FB2 1 |
| 866.38750 FB2 1 | 866.46250 FB2 1 |

- | | |
|-----------------|-----------------|
| 866.56250 FB2 1 | 866.73750 FB2 1 |
| 867.08750 FB2 1 | 867.68750 FB2 1 |
| 867.93750 FB2 1 | 868.15000 FB2 1 |
| 868.21250 FB2 1 | 868.42500 FB2 1 |
| 868.51250 FB2 1 | 868.67500 FB2 1 |
| 868.81250 FB2 1 | 868.21250 FB2 1 |
| 868.42500 FB2 1 | 868.51250 FB2 1 |
| 868.67500 FB2 1 | 868.81250 FB2 1 |

Control Points: 373 S HIGH ST COLUMBUS, FRANKLIN OH

(WILL EVENTUALLY BE COUNTYWIDE LOCAL GOV SYSTEM)
FRANKLIN, COUNTY OF SHERIFF WNQQ217
MOTOROLA TYPE Iii
YP - PUBLIC SAFETY/SPEC
373 S HIGH STREET
COLUMBUS OH 43215
LOC. 1. 373 S HIGH ST COLUMBUS, FRANKLIN OH
LOC. 2. AREA OF OPERATION COUNTYWIDE: FRANKLIN,OH
LOC. 3. 6131 HIGHLAND LAKES AVE WESTERVILLE, DELAWARE OH

- | | |
|----------------------|----------------------|
| 1. 856.26250 FB2C 1* | 857.26250 FB2C 1*(C) |
| 858.26250 FB2C 1*(C) | 859.26250 FB2C 1*(C) |
| 860.26250 FB2C 1*(C) | |
| 2. 811.26250 MO 950 | 812.26250 MO 950 |
| 813.26250 MO 950 | 814.26250 MO 950 |
| 815.26250 MO 950 | |
| 3. 856.26250 FB2C 1 | 857.26250 FB2C 1 |
| 858.26250 FB2C 1 | 859.26250 FB2C 1 |
| 860.26250 FB2C 1 | |

CONTROL POINTS: 373 S HIGH ST COLUMBUS, FRANKLIN OH

GROVE CITY, CITY OF WPBY922
YP - PUBLIC SAFETY/SPEC
GROVE CITY OH 43123
LOC. 1. LAND MOBILE CONTROL STATION MEETING THE 6.1 METER
RULE: OH
LOC. 2. 3201 MARLANE DR GROVE CITY, FRANKLIN OH
LOC. 3. AREA OF OPERATION COUNTYWIDE: FRANKLIN,OH

- | | |
|--------------------|-----------------|
| 1. 811.2375 FX1 2 | 812.2375 FX1 2 |
| 813.2375 FX1 2 | 814.2375 FX1 2 |
| 815.2375 FX1 2 | |
| 2. 856.2375 FB2C 1 | 857.2375 FB2C 1 |
| 858.2375 FB2C 1 | 859.2375 FB2C 1 |
| 860.2375 FB2C 1 | |
| 3 811.2375 MO 500 | 812.2375 MO 500 |
| 813.2375 MO 500 | 814.2375 MO 500 |
| 815.2375 MO 500 | |

CONTROL POINTS: 3360 PARK ST GROVE CITY OH

USERS
JACKSON TWP FIRE PLEASANT TWP FIRE

GROVE CITY, CITY OF WPBE657
GP - PUBLIC SAFETY/SPEC
GROVE CITY OH 43123
LOC. 1. AREA OF OPERATION COUNTYWIDE: FRANKLIN,OH
1. 853.4875 MO 350
CONTROL POINTS: 3360 PARK ST GROVE CITY, FRANKLIN OH

SOFTWARE

*Mike Agner KA3JJZ
112 Water Fountain Way #304
Glen Burnie Md. 21060-2309
email: ka3jjz@erols.com*

Sorry, no column this issue.

MAINE

*Loren Fields
c/o Scanner Digest
POB 207
Jamison PA 18929
hornsmoke@prexar.com*

Greetings from Maine! Things are quite "status quo" at this point in time regarding frequency changes. Other works are in the process of becoming reality. The Maine State Police (MSP) Regional Communications Center (RCC) in Augusta will be transferring/moving completely to the sprawling, now-vacated Sanima/SCI complex northwest of Augusta on Rt. 27. With them will be the MSP garage, radio shop, and the Maine Emergency Management Agency (MEMA) currently located on Camp Keyes, adjacent to the Augusta Municipal Airport. The new occupants are scheduled to be in there by August 2004. I'd welcome any postings of news articles in the future that our extensive membership could provide.

I was reminded quite recently of how treacherous wireless phone communications and functionality can be in certain parts of Maine, even in Maine's capitol city of Augusta. Visitors with Sprint and Nextel phones beware... 'Twas a cold night in Maine when I picked up a stranded motorist on I-95 walking southbound only a mile from Exit 31/Mile 112. His car had broken down, and he was unable to make contact with anyone due to his Sprint technology, since Sprint currently has NO towers for the area. The Moral of the Story: don't get fooled by slick advertising and dazzling technology. Didn't a famous English fellow named Tolkien write "All that glitters is not gold"?

Speaking of I-95, most are now aware of the renumbering foolishness that has now been implemented on Maine's Turnpike and Interstate system by the Maine Department of Transportation (MDOT). While intelligently clearing up road designation confusion (MTA, I-95, I-495, I-295), more chaos has been generated with changing the sequential and numerical Exits to ones based purely on a mileage number. Monitoring enthusiasts need to know "what exit is which" when tuning in to the Maine State Police. Here is a synopsis of the changes.

The entire Maine Turnpike from Kittery to Augusta will become I-95. Where the Maine Turnpike ends in Augusta, I-95 will continue all the way from Augusta to Houlton. Likewise, I-295 will begin, as it does today, in Scarborough and will extend through Portland, Brunswick and all the way to Gardiner. Truckers currently refer to I-295 as "the Poor Man's Road" by virtue of its toll-free status, and also because it originally was made from concrete. The Maine Turnpike toll structure system was originally supposed to revert back to a "non-tax" highway upon completion of the Interstate system. However, as expected, the politicians of Maine, like every other state, could not contain their gluttony and continue, to this day, to slurp and snort at the cash-cow hog trough. An upside is that although expensive, the Maine Turnpike/I-95 toll portion has one snowplow per 11 miles, as opposed to one snowplow for every 21 miles on I-295. So, in a snowstorm, pay the blood tax,

drive the additional 10 miles, and arrive more safely in Augusta. Additionally there is 24-7 Maine State Police coverage on the toll portion of the highway. Troop "G", the seven-hundred series of calls, covers this area. They are our version of the highway patrol, but have absolute power as their colleagues in other Troops. All this is paid for by those nasty and onerous tolls we must endure.

Highway (original)	Exit # (original)	Name	New Label	Exit #
I-95	1	Eliot	I-95	1
I-95	2	Kittery	I-95	2
I-95	3	Kittery	I-95	3
I-95	4	York	I-95	7
ME TPK	2	Wells	I-95	19
ME TPK	3	Kennebunk	I-95	25
ME TPK	4	Biddeford	I-95	32
ME TPK	5	Saco	I-95	36
ME TPK	6	Scarborough	I-95	42
ME TPK	6A	Scar/South PrtInd	I-95	44
ME TPK	7	Portland	I-95	45
ME TPK	7A	Portland	I-95	46
ME TPK	7B	Portland	I-95	47
ME TPK	8	Westbrook	I-95	48
ME TPK	9	Falmouth Spur	I-95	52
ME TPK	10	Falmouth	I-95	53
ME TPK	11	Gray	I-95	63
ME TPK	12	Auburn	I-95	75
ME TPK	13	Lewiston	I-95	80
ME TPK	NEW	Sabattus	I-95	86
ME TPK	14A	W. Gardiner	I-95	102
ME TPK	14B	W. Gardiner	I-95	103
I-95	30A/B	Augusta	I-95	109
I-95	31A/B	Augusta	I-95	112
I-95	32	Sidney	I-95	120
I-95	33	Oakland	I-95	127
I-95	34	Waterville	I-95	130
I-95	35	Fairfield	I-95	132
I-95	36	Fairfield	I-95	133
I-95	37	Clinton	I-95	138
I-95	38	Pittsfield	I-95	150
I-95	39	Newport	I-95	157
I-95	40	Detroit	I-95	159
I-95	41	Plymouth	I-95	161
I-95	42	Etna	I-95	167
I-95	43	Carmel	I-95	174
I-95	44	Hampden/Dysarts	I-95	180
I-95	45	Bangor/Brewer	I-95	182
I-95	46	Bangor (Hammond St.)	I-95	183
I-95	47	Bangor (Union St.)	I-95	184
I-95	48	Bangor (Broadway)	I-95	185
I-95	48A	Bangor Mall	I-95	186
I-95	49	Bangor (Hogan Rd.)	I-95	187
I-95	50	Orono	I-95	191
I-95	51	Orono (Stillwater Ave.)	I-95	193
I-95	52	Old Town	I-95	197
I-95	53	Alton	I-95	199
I-95	54	Howland	I-95	217
I-95	55	Lincoln	I-95	227
I-95	56	Medway	I-95	244
I-95	57	Benedicta	I-95	259
I-95	58	Sherman	I-95	264
I-95	59	Island Falls	I-95	276
I-95	60	Oakfield	I-95	286
I-95	61	Smyrna	I-95	291

I-95	62	Houlton	I-95	302
I-95	63	Houlton/Canada	I-95	305
I-295	1	Portland	I-295	1
I-295	2	Portland	I-295	2
I-295	3	Portland	I-295	3
I-295	4	Portland	I-295	4
I-295	5 A/B	Portland	I-295	5
I-295	6 A/B	Portland	I-295	6
I-295	7	Portland	I-295	7
I-295	8	Portland	I-295	8
I-295	9	Portland	I-295	9
I-295	10	Falmouth	I-295	10
I-295	15	Falmouth	I-295	11
I-295	16	Yarmouth	I-295	15
I-295	17	Yarmouth	I-295	17
I-295	19	Freeport	I-295	20
I-295	20	Freeport	I-295	22
I-295	21	Freeport	I-295	24
I-295	22	Brunswick	I-295	28
I-295	23 A/B	Topsham	I-295	31
I-295	25	Bowdoinham	I-295	37
I-295	26	Richmond	I-295	43
I-295	27	Gardiner	I-295	49
I-295	28	Gardiner	I-295	51

So, when traveling our fine state, plug in the following freqs for Maine State Police Troop "G" Troopers:

156.045 is the simplex channel between the SP Troop G units and the Turnpike Dispatcher. You should hear this simplex base well in the LA area, but will only hear the Turnpike dispatch clearly. As you might guess, you would hear the Troop G mobiles on the pike only if they were in that area. This FB is controlled by a UHF link from Pike Communications Center in Portland.

156.045 is also located at the Kennebunk Maintenance facility and is controlled by a UHF link.

160.770R is located at the Gardiner Maintenance Facility tower (self supporter) and York Maintenance Facility. Without an outside antenna you may have a hard time hearing this. Also, its traffic (through a UHF backbone) comes from the Turnpike Maintenance Channel **151.070R**

151.070R is the Pike's primary Maintenance channel. Transportation supervisors, service stations (service wreakers), and the tolls all use this channel. Troop G units are heard also as coverage is good mobile to mobile.

156.150R is Gray Regional Communications Center (RCC).
154.935 is State Police Car-to-Car.

Until next time, keep the Eagle flying free; support our President and troops, and God Bless America.

Best to all, Loren Fields, N1UMF
hornsmoke@yahoo.com

OREGON

Jeff Newton
c/o Scanner Digest
POB 207 Jamison PA 18929
newton@efn.org

Sorry, no column this issue.

VIRGINIA

Rob Turner
c/o Scanner Digest
POB 207
Jamison PA 18929-0207
rctact@comcast.net

Sorry, no column this issue.

NORTHERN NEW JERSEY

Justin Mattes KC2GIK
10 Carnot Avenue
Woodcliff Lake NJ 07677
Jaymatt1978@excite.com
www.bergenscanner.com

Sorry, no column this issue

WESTERN MARYLAND NEWS

Jason Grabill
10524 Stull Road
Frederick MD 21702
zebra305@earthlink.net

Sorry, no column this issue

PA-SitRep

PA-SitRep, formed in May, 2001, is a non-commercial project attempting to bring all forms of communications together to better inform the people of Pennsylvania of emergency communication and emergency situations in and about the Commonwealth of PA.

In addition to providing Emergency Communications information for all the Counties throughout the State, PA-SitRep administers an Emergency Alert E-Mail System catering to the users of Cell Phones, Alpha-numeric Pagers and PDA's as well as regular e-mail. Our Emergency Alert System is NOT an incident reporting system. List volume is very low as posts to the list (of our over 600 subscribers) are strictly limited to MAJOR Emergency Situation Reports (Sitreps) relating to Pennsylvania.

PA-SitRep has formed a group of PA-SitRep Contacts, most of whom are Amateur Radio Operators and or Scanner Enthusiasts. PA-SitRep Contacts are asked to make available their contact information for the PA-SitRep Contact web page and monitor public service frequencies in their area. In the event of a MAJOR emergency situation, we attempt to contact PA-SitRep Contacts for emergency situation reports. PA-SitRep Contacts are also asked to post developing or major emergency situation reports to a secondary reporting e-mail list which, in addition to general discussion, is used for monitoring developing emergency situations. When warranted, specially authorized PA-SitRep Administrators move the Emergency Situation Reports to our main Emergency Alert list where the Situation Report is distributed to over 600 subscribers throughout the state of Pennsylvania.

PA-SitRep Contacts are encouraged (but not required) to have secondary means of communications such as Amateur Radio (UHF/VHF, HF and or Echolink) or SMS (short message service via cell phone, PDA or 2 way pager).

The ultimate goal with PA-SitRep is to build a significant enough network of Contacts throughout Pennsylvania to provide rapid emergency situation reporting service, free of charge, to any interested served agencies, much in the same way that the SKYWARN organization provides weather situation reports for the National Weather Service.

The PA-SitRep project is still in it's early stages of development, but with now over 50 registered PA-SitRep Contacts and a fairly extensive website, things are starting to take shape as the organization moves forward.

Any individuals, or groups, interested in volunteering as PA-SitRep Contacts are welcome to visit the www.PA-SitRep.com website for more information. Or you may contact me directly via e-mail at owner@pa-sitrep.com or by phone at 412-720-0210.

-David Kleber, KB3FXI
www.PA-SitRep.com

ALL OHIO SCANNER CLUB

The primary activity, and reason for being, of the AOSC is it's newsletter. The "American Scannergram" is an information exchange providing members with a common means of sharing information and resources which are vital to the continued enjoyment of the radio listening hobby.

The cost of membership in the ALL OHIO SCANNER CLUB is \$24.00 per year (\$28.00 for Canadian and Mexican residents, \$32.00 for all other countries), payable in U.S. Funds. Membership dues are non-refundable. (A newsletter sample copy is available for \$3.00). URL: <http://www.aosc.org>

CAPITOL HILL MONITORS

The *Capitol Hill Monitors* is a club for scanner radio enthusiasts in [Washington, D.C.](#), [Maryland](#), northern [Virginia](#) and lower [Delaware](#). CHM sponsors tours and meetings throughout the year. The club's newsletter supplements other hobbyist publications such as *Monitoring Times*.

The *Capitol Hill Monitor* is the non-profit newsletter of the Capitol Hill Monitors. The newsletter keeps scanner enthusiasts abreast of local meetings, tours, frequency profiles and other topics of interest. Dues (which include 12 issues) are \$10. Kindly make checks payable to Alan Henney.

URL: <http://henney.com/chm/>

=====

This space is reserved for any scanner related group. Scanner Digest readers are encouraged to send in URLs of various groups that promote the hobby of radio monitoring – "scanning". We would be happy to post a brief description along with contact information.

Email: ScannerDigest@usa.com

=====



My name is Ken Sprouse and my amateur radio call sign is WA3FKG. If you are in the Pittsburgh area, please join us on Sunday evenings at 21:00 hours local time for the Pittsburgh Area Scanner Net. We are a group of ham radio operators that enjoy this aspect of the radio hobby and like to get together to on the air to discuss scanning and anything related to scanning. We meet on the North Hills Amateur Radio Club's **147.0900** repeater.

We discuss equipment, antennas, public safety and business radio systems, software, trunking and anything else that we deem related to the hobby. We have had several good nets talking about scanning railroad frequencies and I have learned a lot about the communications system used by the railroads. Many of the people that check in are also involved in firefighting or emergency medical services so we find ourselves talking about things like Code 3 Collectibles.

If you are not licensed program **147.0900** into your scanner and listen in. If you wish to participate you can send email to wa3fkg@arrl.net with questions or comments on the net. Feel free to suggest topics that you would like to hear discussed on the net. One of the reasons that I have made this a formal net that meets each week is that I have been contacted by a number of scanner listeners who are interested in getting their amateur radio license. Once they find out just how easy it is and that you no longer have to take a mores code test many have joined the ranks. At least three of the people that I started out communicating with by email now check into the net and I talk with them on the air.

We also plan to organize some events this summer. We have had some round table sessions at a local King's restaurant on a few occasions and plan to have more. We had a table at the Wireless Association of South Hills club ham fest (The WASH Fest) and got to meet many scanner users. We will have a table at the upcoming Breeze Shooters ham fest in Butler PA on June 1st 2003. If you are in the area stop in and say "Hello". For more details on the ham fest, check out this web page.

<http://www.breezeshooters.net/hamfest/hamfest.htm>

I would also like to have a "scanner" picnic sometime this summer where we can get the families together have some fun and bring our portable scanners. So come and join in on the fun. Drop me a note in the mail or better yet check in on the net. You can also get some details on the scanner net at:

<http://www.qsl.net/wa3fkg>

Hope to hear from you. Ken/WA3FKG

ScannerDigest Newsletter

Welcome to the Scanner Digest Newsletter! We're currently publishing a bi-monthly e-magazine containing information for the scanner hobbyist. If it can be monitored on a scanner, we'll attempt to cover it from 30 to 1300 MHz and beyond!

Our purpose is to produce a newsletter to facilitate the exchange of information pertaining to the various services covered by a typical scanner radio. Dedicated regional column editors make up the heart of this publication.

The Scanner Digest Newsletter is not responsible for the accuracy or consequences incurred regarding the use of information listed in this publication. Since the purpose of this newsletter is to provide a platform for the submission and exchange of radio communication information, it thus becomes impossible to deem all contents as accurate. The very nature of radio licensing and usage makes it difficult to verify the accuracy of the information contained within. Generally information listed within the pages of the newsletter are derived from multiply sources including current FCC files, hobbyists and those directly involved with various public safety agencies.

Scanner Digest's policy has been not to limit or edit the individual columns submitted, unless we deem the information sensitive in nature which may jeopardize the safety of the parties involved. Only in this case will we edit out this type of input. (Example: We will not publish the frequencies used by a law enforcement surveillance team.)

Naturally the comments of the various column editors are not necessarily the views and opinions of the Scanner Digest Newsletter. All materials, maps, information, photographs submitted to a regional column editor or to Scanner Digest directly, become sole property of the Scanner Digest Newsletter. We encourage and will make every effort to give proper credit to all submissions. All contents within are copyrighted. ©2003

Subscription Information

Subscriptions are acknowledged via email or standard USPS mail. Currently Scanner Digest Newsletter produces six (6) issues per year but plan to be a monthly publication in the very near future. Newsletters will be emailed to subscribers to via an attachment. The attached document will be in the popular Adobe Acrobat PDF file. A free version of the Acrobat Reader is available from, www.adobe.com. By accepting these terms you are made aware of the consequences of opening such attachments. We will scan each outgoing email with an anti-virus tool to minimize any possibility of transmitting an infectious message.

Email inquiries send to: **ScannerDigest@usa.com**

For those who are not email or computer accessible we offer an alternative option in which we will print out a copy of the current issue of the newsletter and have it mailed via USPS (first-class). We will provide this service for a limited time only. We have the right to terminate this option at any time. For each issue requested please included \$1.90 for laser printing and 60¢ for postage and send a \$2.50 check or money order to the address listed below.

Make check (U.S. \$) payable to: **"Lou Campagna"**

Mail to: ***ScannerDigest Newsletter***
POB 207
Jamison PA 18929-0207